

Day 5 26th November 2013

Drawing Feet

The toe next to the big toe is longer.

When viewed from the side, toes are shown with two joints.

Observe the width of the toes. Mark off four equal spaces for the toes.

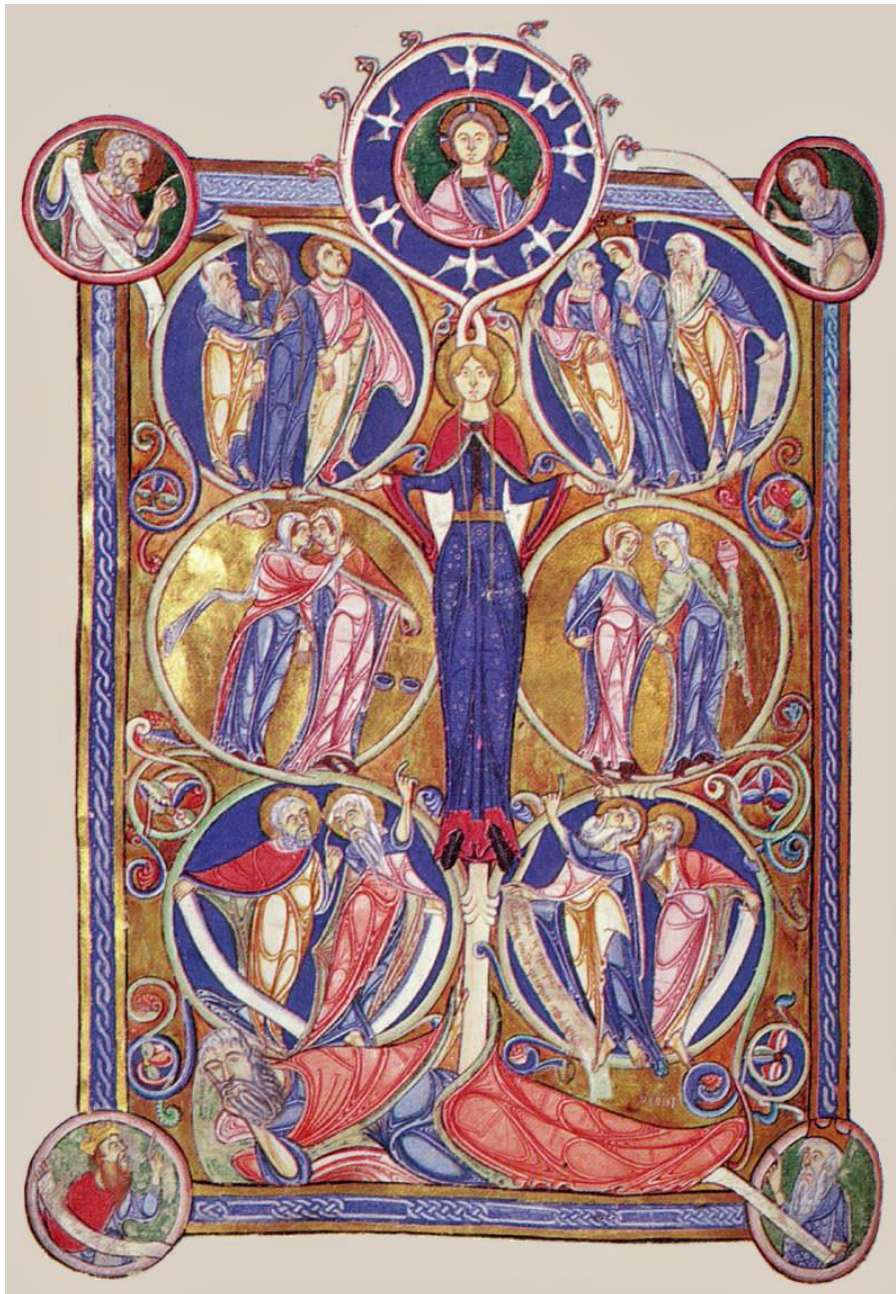
When seen from the side, the second toe is also seen as longer.

Examples of toes from the Bury St Edmunds gospel



Feet are approximately $\frac{3}{4}$ head length – but vary. Anything near is lighter, further away shown darker.

Cool colours recede, warm colours advance.



Unknown Miniaturist, English (active 1140s)
Title The Tree of Jesse